



# COMPANY

*Profile*

2026

**Industrial Construction | Factory  
Development | Civil & Structural Execution**

[www.kirpalaengineering.com](http://www.kirpalaengineering.com) +91-8860703870, +91-9711187187

2026



KIRPALA ENGINEERING

# WHO WE ARE?

Kirpala Engineering is a professionally managed industrial construction and civil execution company specializing in the development of factories, warehouses, industrial sheds, RCC structures, machine foundations, and expansion projects.

With strong on-ground execution capability and a commitment to quality, safety, and timely delivery, we provide end-to-end construction solutions tailored to the needs of industrial clients. Our expertise lies in understanding technical drawings, BOQ-based execution, structural requirements, and site coordination to ensure smooth project delivery from start to finish.

We work closely with factory owners, EPC teams, and project managers to deliver durable, cost-effective, and high-performance construction solutions that support long-term business growth.

At Kirpala Engineering, our focus is not just on construction, but on building reliable industrial infrastructure with precision, professionalism, and trust.

[LEARN MORE](#)

[www.kirpalaengineering.com](http://www.kirpalaengineering.com)



KIRPALA ENGINEERING

# OUR VISION & MISSION

## Vision

Our vision is to contribute to the growth of India's industrial sector by building strong, efficient, and future-ready factories, warehouses, and industrial facilities that empower businesses to grow with confidence.

## Mission

Our mission is to deliver high-quality, cost-effective, and technically sound industrial construction solutions through disciplined planning, skilled execution, and transparent coordination.



# WHY KIRPALA ENGINEERING?



At Kirpala Engineering, we combine technical expertise, practical site experience, and disciplined project execution to deliver reliable industrial construction solutions. Our strength lies in understanding the unique requirements of factories, warehouses, industrial sheds, machine foundations, RCC structures, and expansion projects, ensuring every project is executed with precision and long-term durability.

## Clients choose us because of our:

- Strong industrial construction expertise
- BOQ and drawing-based accurate execution
- Commitment to quality and safety standards
- Timely completion with proper planning
- Cost-effective and budget-focused solutions
- Experienced site engineers and supervisors
- Transparent communication and progress updates
- Capability to handle both new construction and expansion works

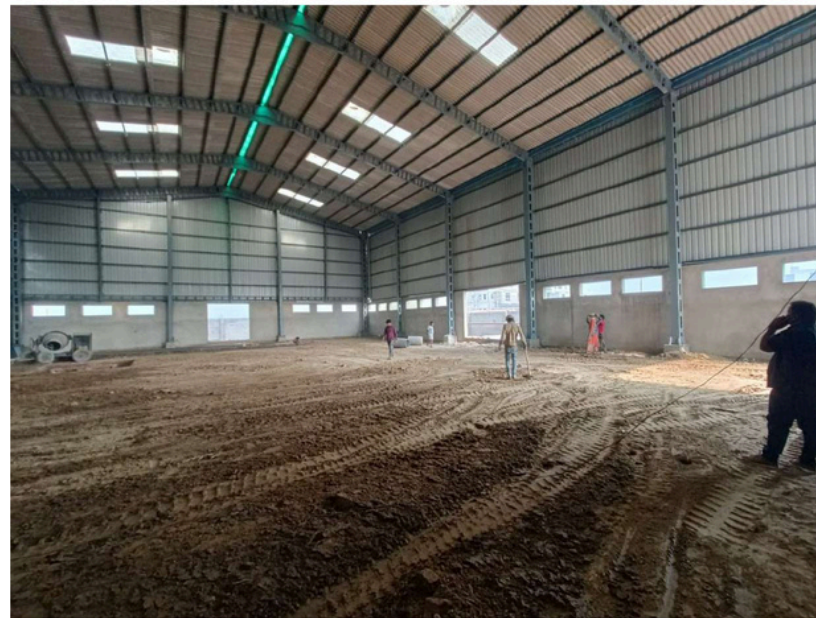
We believe in building more than structures – we build trust, long-term relationships, and dependable industrial infrastructure that supports our clients' operational growth.



# OUR *Services*



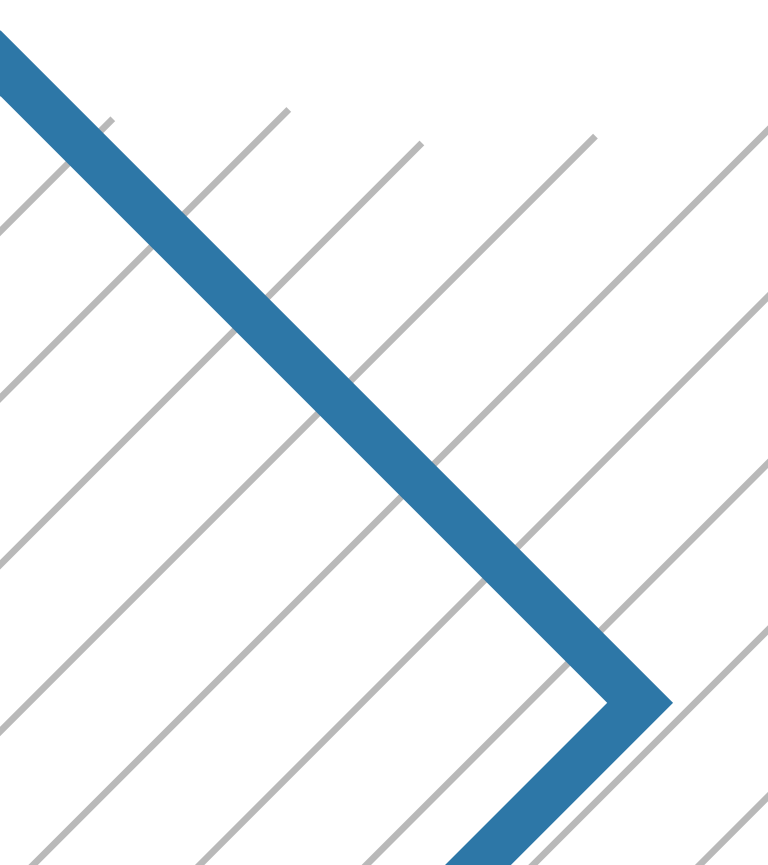
## Industrial Building Construction



## PEB & Industrial Shed Work



## RCC Structures & Foundations



# INDUSTRIES WE SERVE

**01** Manufacturing Plants

**02** Engineering Workshops

**03** Warehousing & Logistics Parks

**04** Pharma & Clean Utility Areas

**05** Automobile & Auto Ancillary Units

**06** Food Processing Plants



# HOW WE WORK

At Kirpala Engineering, our work process is built on planning, technical clarity, disciplined execution, and transparent coordination to ensure every industrial project is delivered smoothly and efficiently.

---

**Our step-by-step working approach includes:**

- Requirement Understanding
- Drawing & BOQ Review
- Site Assessment & Planning
- Resource Mobilization
- Execution with Quality Control
- Progress Monitoring & Client Updates
- Timely Handover

The final stage includes finishing checks, snag closure, and timely project handover, ensuring the facility is ready for operational use.

At every step, our focus remains on precision, accountability, cost control, and timely delivery.

# Meet **OUR TEAM**



**HARJEET PANWAR**

FOUNDER/ CEO



**YOGESH PANWAR**

MANAGING DIRECTOR



**ROMI BHARDWAJ**

Project Manager

KIRPALA ENGINEERING



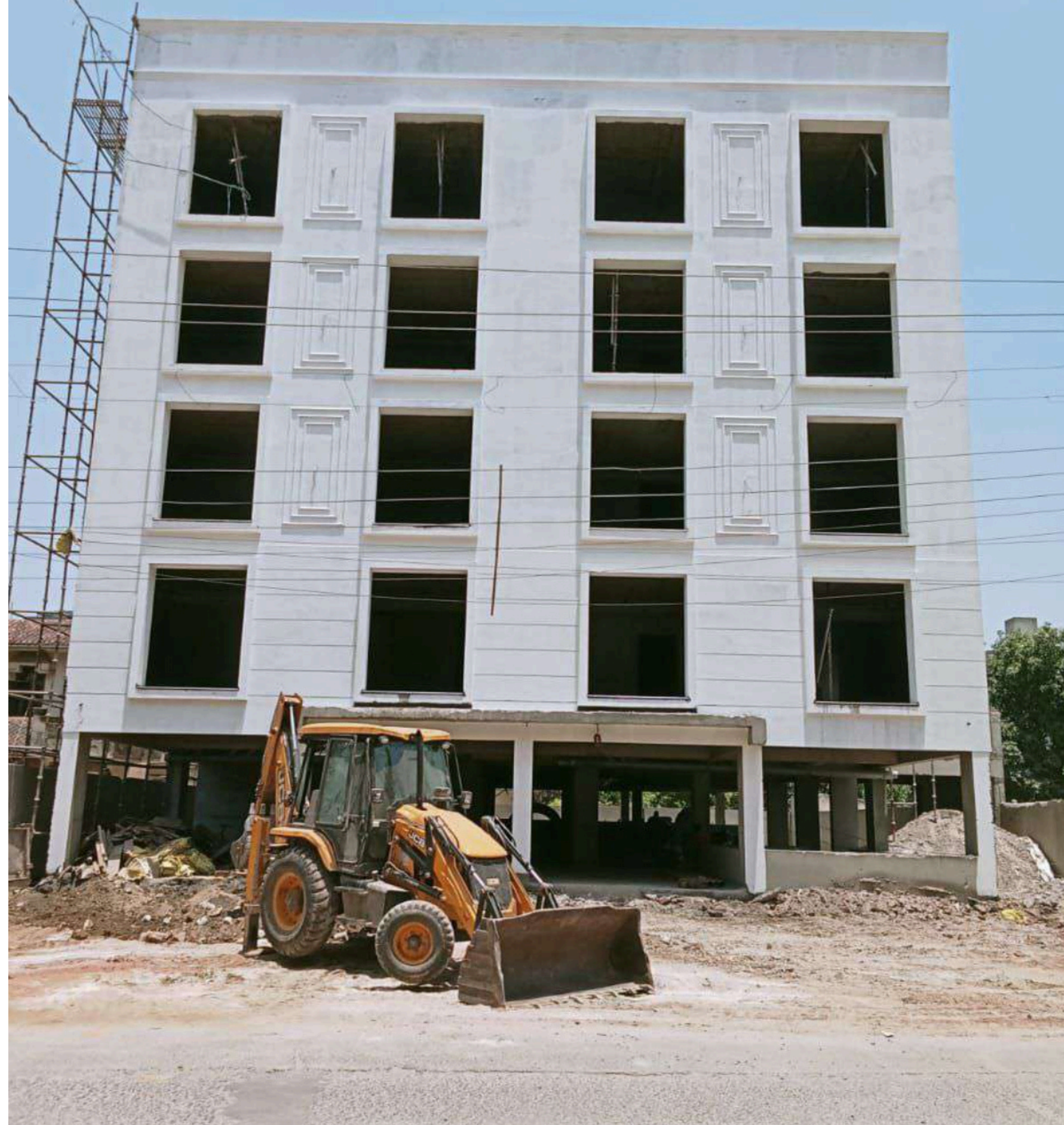
# PROJECT HIGHLIGHTS

[www.kirpalaengineering.com](http://www.kirpalaengineering.com)









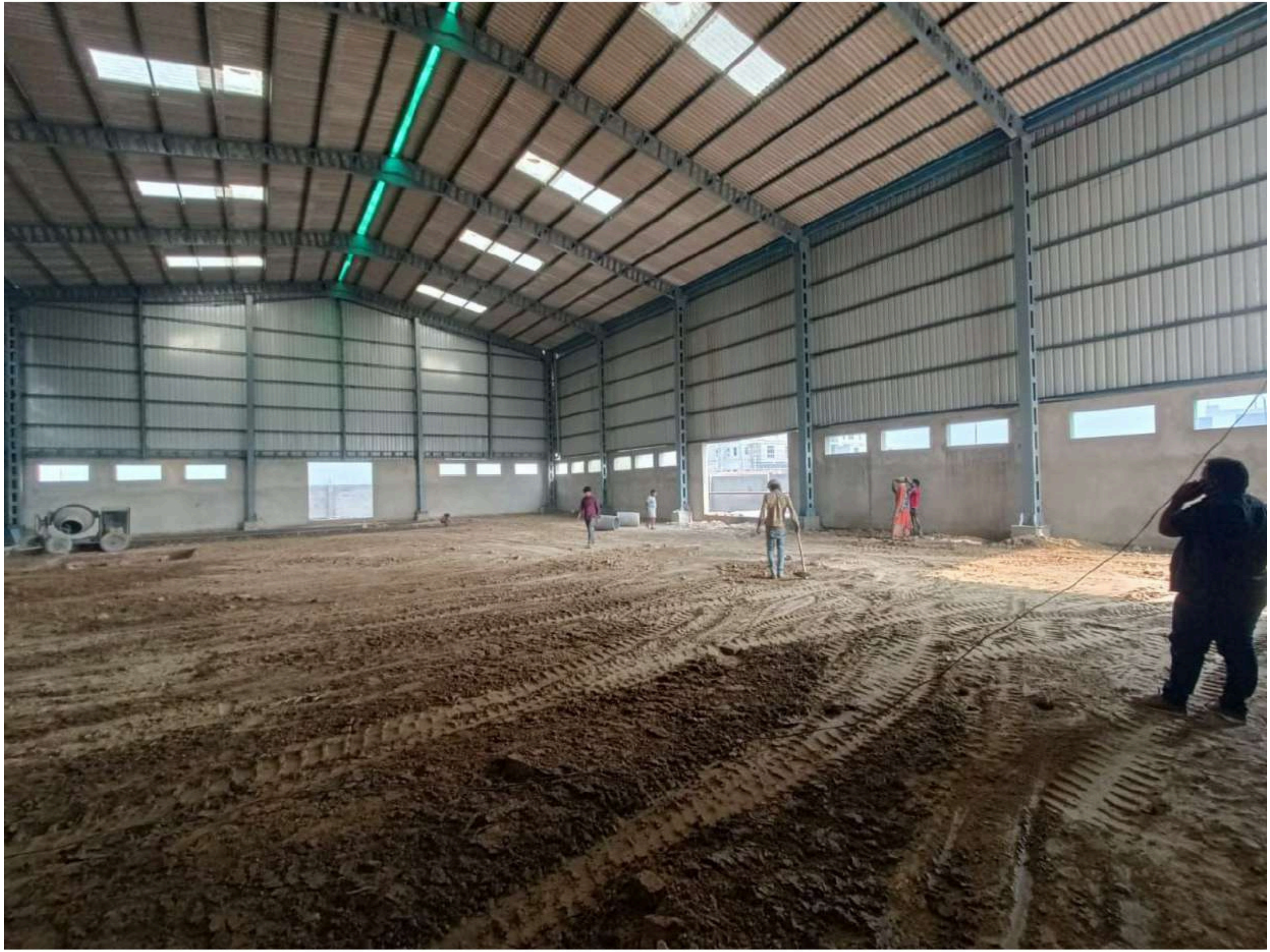










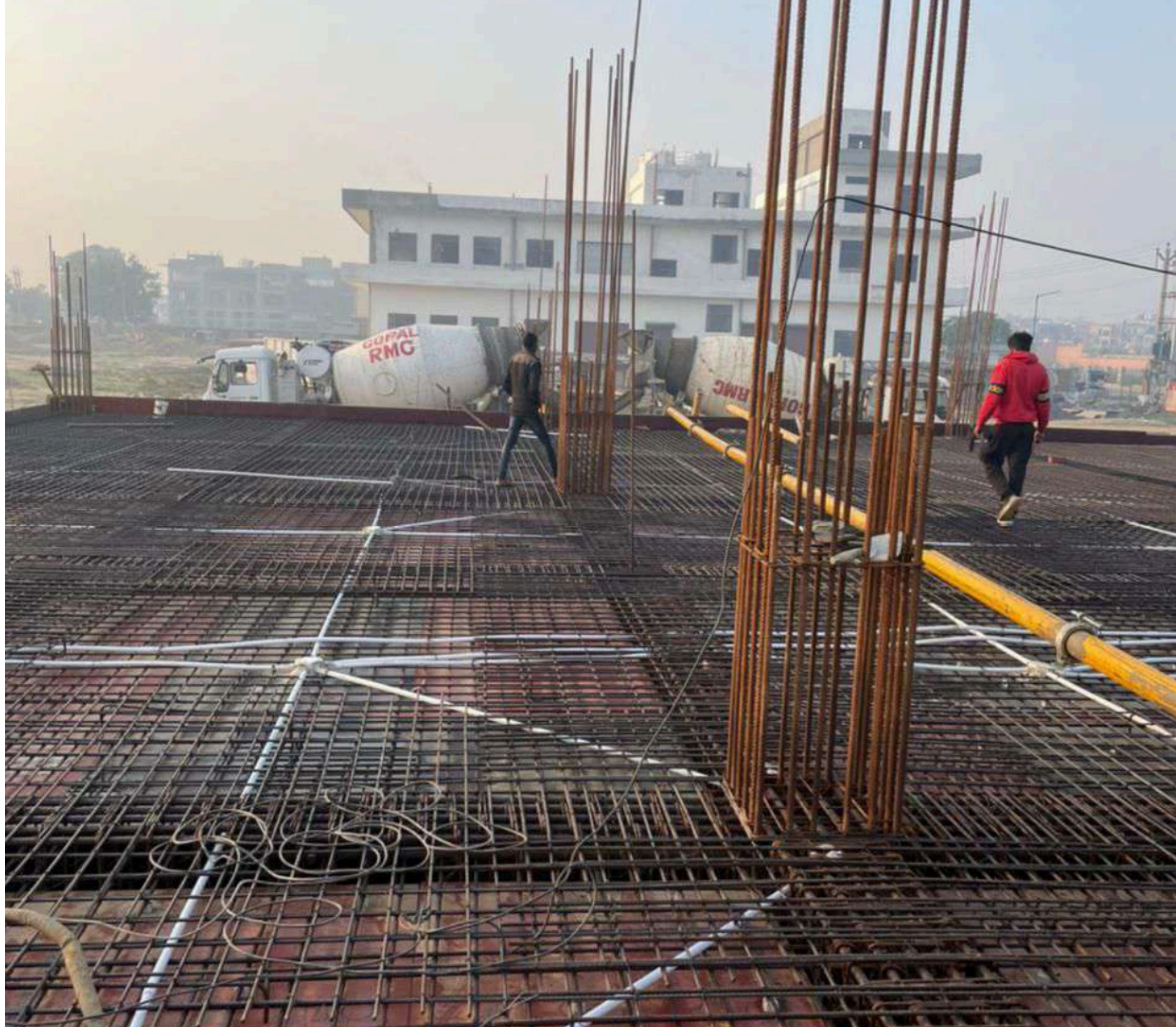
















Monu Chauhan  
9871596666

HIV







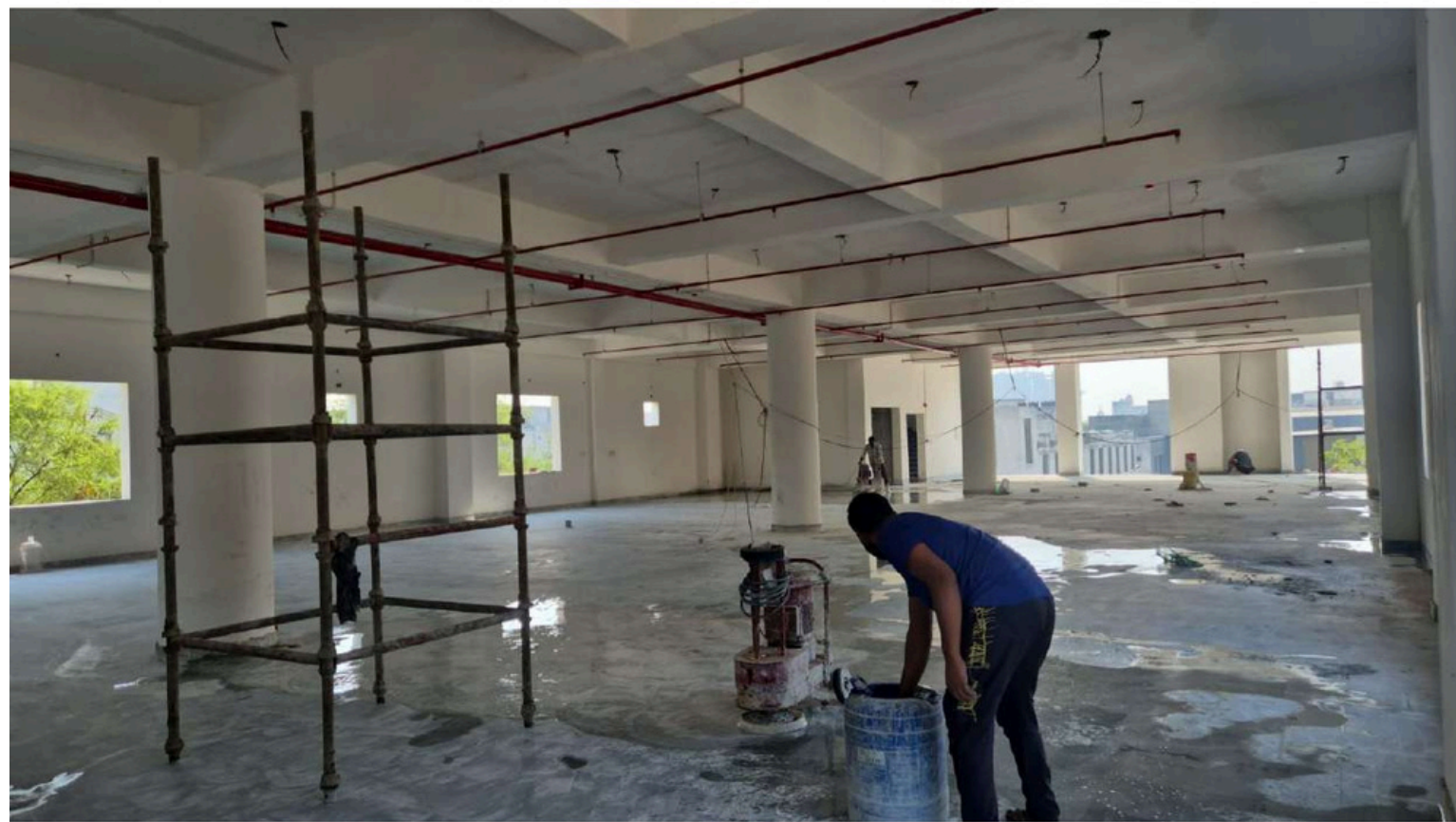
Shot on OnePlus



Shot on OnePlus



Shot on OnePlus











# CONTACT



+91-8860703870, +91-9711187187



kirpalaengg@gmail.com



[www.kirpalaengineering.com](http://www.kirpalaengineering.com)



2069, Sector-64, Near IMT Chowk  
Ballabgarh Faridabad 121004 (HR.)

---



KIRPALA ENGINEERING

# THANK YOU

It's been a pleasure introducing ourselves.  
Let's take the next step—together.

---

[www.kirpalaengineering.com](http://www.kirpalaengineering.com)

